



# 35m Truck Mount

## MACHINE SPECIFICATION SHEET

### TM35

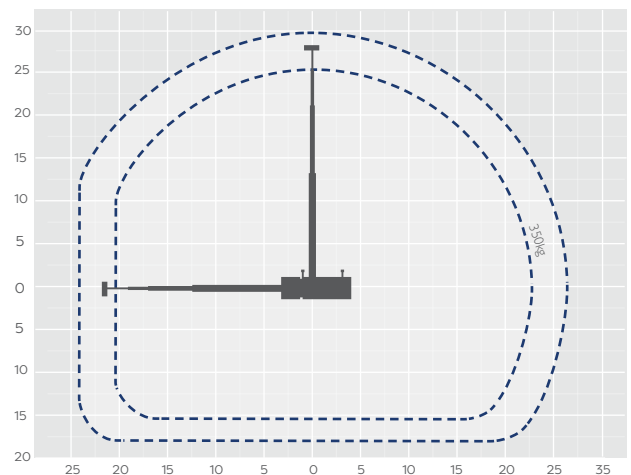
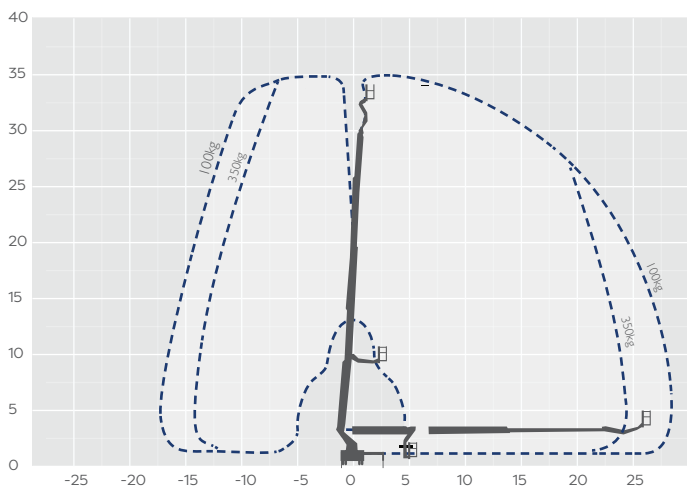
REACH HEIGHT	35.00m
PLATFORM HEIGHT	33.00m
CLOSED LENGTH	9.20m
CLOSED HEIGHT	3.50m
CLOSED WIDTH	2.50m
HORIZONTAL REACH	29.30m
WIDTH MAX WORKING	6.25m
WIDTH MIN WORKING	2.55m Variable
SAFE WORKING LOAD	350kg
WEIGHT	1,800kg
CAGE DIMENSIONS	1.80x0.80x1.10m
CAGE ROTATION	160°
IPAF CATEGORY	1b operated
SLEW	540°

FEATURED MODEL	WUMAG WT350
----------------	-------------

## WILSON ACCESS HIRE

Wumag WT350 truck mounted cherry picker has a reach height of 35.00m, a 29.30m outreach and a 350kg basket capacity. With its articulated cage boom, the Wumag WT350 is ideally suited to many applications. The WT350 Wumag is very much at home on city streets, making it an ideal choice for use in the telecoms sector, media and TV, surveying and highway maintenance jobs that require working at height. This machine is supplied with an experienced and fully qualified operator.

The information provided is for guidance only. It may change at any time in accordance with manufacturer's specification. Variable jacking will affect the working envelope. Outreach is variable depending on load, angle of rotation and outrigger configuration.



### Side profile

